

## Eyeball Network Camera Quick Setup Guide

NO:101-400-0184-01  
Issue:1.0

### Precautions

Fully understand this document before using this device, and strictly observe rules in this document when using this device. If you install this device in public places, provide the tip "You have entered the area of electronic surveillance" in an eye-catching place. Failure to correctly use electrical products may cause fire and severe injuries.

<b>WARNING</b>	It alerts you to moderate dangers which, if not avoided, may cause minor or moderate injuries.
<b>CAUTION</b>	It alerts you to risks. Neglect of these risks may cause device damage, data loss, device performance deterioration, or unpredictable results.
<b>NOTE</b>	It provides additional information.

### **WARNING**

- Strictly observe installation requirements when installing the device. The manufacturer shall not be held responsible for device damage caused by users' non-conformance to these requirements.
- Strictly conform to local electrical safety standards and use power adapters that are marked with the LPS standard when installing and using this device. Otherwise, this device may be damaged.
- Use accessories delivered with this device. The voltage must meet input voltage requirements for this device.
- If this device is installed in places with unsteady voltage, ground this device to discharge high energy such as electrical surges in order to prevent the power supply from burning out.
- When this device is in use, ensure that no water or any liquid flows into the device. If water or liquid unexpectedly flows into the device, immediately power off the device and disconnect all cables (such as power cables and network cables) from this device.
- Do not focus strong light (such as lighted bulbs or sunlight) on

this device. Otherwise, the service life of the image sensor may be shortened.

- If this device is installed in places where thunder and lightning frequently occur, ground the device nearby to discharge high energy such as thunder strikes in order to prevent device damage.

### **CAUTION**

- Avoid heavy loads, intensive shakes, and soaking to prevent damages during transportation and storage. The warranty does not cover any device damage that is caused during secondary packaging and transportation after the original packaging is taken apart.
- Protect this device from fall-down and intensive strikes, keep the device away from magnetic field interference, and do not install the device in places with shaking surfaces or under shocks.
- Clean the device with a soft dry cloth. For stubborn dirt, dip the cloth into slight neutral cleanser, gently wipe the dirt with the cloth, and then dry the device.
- Do not jam the ventilation opening. Follow the installation instructions provided in this document when installing the device.
- Keep the device away from heat sources such as radiators, electric heaters, or other heat equipment.
- Keep the device away from moist, dusty, extremely hot or cold places, or places with strong electric radiation.
- If the device is installed outdoors, take insect- and moisture-proof measures to avoid circuit board corrosion that can affect monitoring.
- Remove the power plug if the device is idle for a long time.
- Before unpacking, check whether the fragile sticker is damaged. If the fragile sticker is damaged, contact customer services or sales personnel. The manufacturer shall not be held responsible for any artificial damage of the fragile sticker.

### Special Announcement

- All complete products sold by the manufacturer are delivered along with nameplates, quick setup guide and accessories after strict inspection. The manufacturer shall not be held responsible for counterfeit products.
- The manufacturer will update this manual according to product function enhancement or changes and regularly update the software and hardware described in this manual. Update information will be added to new versions of this manual without prior notice.
- This manual may contain misprints, technology information that is not accurate enough, or product function and operation description that is slightly inconsistent with the actual product, the final interpretation of company is as a standard.
- This manual is only for reference and does not ensure that the information is totally consistent with the actual product. For consistency, see the actual product.

### **NOTE**

For more information, please refer to CD and website.

## 1 Open Package Examination

Open the package, check the appearance of product for no obvious damage, and confirm the item list for table 1-1 is consistent.

Table 1-1 Packing list

Component	Quantity	Remark
Eyeball Network Camera	1	
Quick Setup Guide	1	
CD-ROM	1	
Green swell plastic button S8*30mm	4	
White self-tapping screw PA4.0*35mm	4	
Focusing wrench	1	
Network access port protective cover	1	
Waterproof rubber seal	1	
Video patch cord	1	

## 2 Device Structure

### 2.1 Device Ports

#### **NOTE**

Different device may have different ports and multi-head cable, please refer to the actual product.

Figure 2-1 Hardware ports

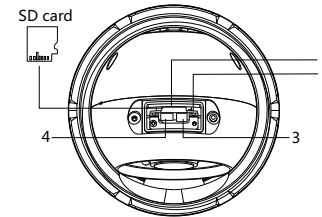


Table 2-1 Hardware ports description

ID	Port Name	Description
1	SD card slot	Install a SD card. <b>NOTE</b> • Before install a SD card, verify the card not in write protection state. • Before remove the SD card, verify the card not in write protection state. Otherwise, the data may be lost, or the SD card may be damaged.
2	SD card indicator	Indicate the card status, the status is described as follows: • Off: No card is inserted • On: A SD card is inserted.
3	BNC Video	Sends an analog video signal. You can connect the camera to a TV monitor through this port to view the analog video.
4	Reset button	Restores the camera to the factory settings by pressing and holding this button for more than five seconds.

Figure 2-2 Multi-head cable

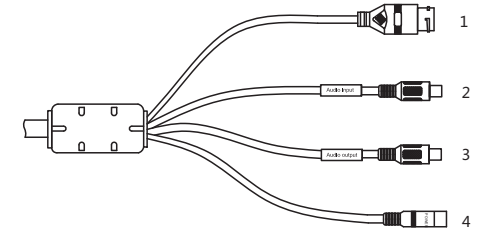


Table 2-2 Multi-head cable description

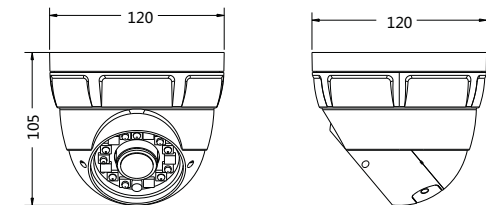
ID	Core	Description	Remark
1	Network access port	Connects to a standard Ethernet cable.	
2	Audio input port	Receives an analog audio signal from devices such as a sound pickup device.	Applied for camera with audio function
3	Audio output port	Connects to an external audio device such as a speaker.	
4	Power supply (DC 12V)	Connects to a 12V(-15%~+10%) direct current (DC) power supply.	

### 2.2 Camera Dimensions

#### **NOTE**

Different device may have different dimensions, please refer to the actual product.

Figure 2-3 Dimensions ( Unit:mm )



## 3 Device Installation

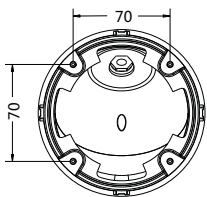
### Installation Steps:

- Open a package, take out the camera, unscrew the camera compression ring, and disassemble the camera.
- Positioning the mounting dimensions base on the dimensions of the mounting base, drill holes on the ceiling or wall and drive the swell plastic buttons into the holes. The dimensions of the mounting base, as shown in figure 3-1.
- Fix the camera mounting base to the ceiling (or wall) by use of self-tapping screws.
- Connect the multi-connector cable.

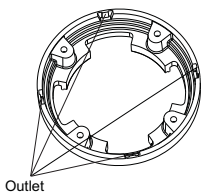
#### **NOTE**

you can route cables from the top or from aside. If you use the top routing method, drill a hole in the installation surface first. If you use the aside routing method, please cut the compression ring outlet, as shown in figure 3-2, and route the multi-head cable out from the side gap at the bottom of the camera.

**Figure 3-1** Dimensions of mounting base

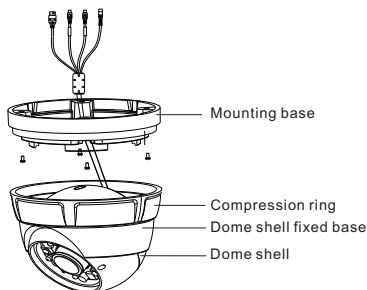


**Figure 3-2** Cut the compression ring outlet



Step 5 Install the dome shell, the dome shell fixed base and the compression ring on the mounting base, as shown in figure 3-3.

**Figure 3-3** camera installation

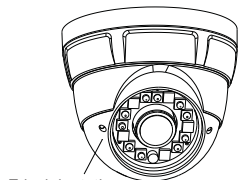


Step 6 Turn the main body, adjust the position so that the camera faces the monitored area, then tighten the compression ring and fix the camera, as shown in figure 3-4.

**NOTE**

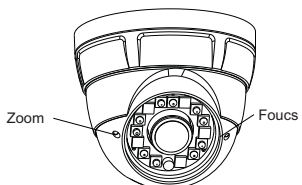
Adjust the position of the camera by triaxial rotation: rotating horizontally, rotating up and down, and performing lens axial rotation, and adjust the camera direction and lens alignment target.

**Figure 3-4** Adjusting camera



Step 7 Adjust view angle and focal length by using an adjusting tool, as shown in figure 3-5.

**Figure 3-5** Adjusting view angle and focal length



## 4 Quick Configuration(e.g IE)

### 4.1 Login

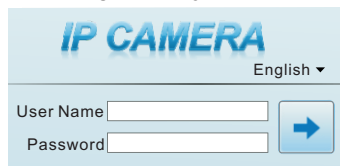
Step 1 Open the Internet Explorer, enter the IP address of IP camera (default value: 192.168.0.120) in the address box, and press Enter. The login page is displayed, as shown in figure 4-1.

Step 2 Input the user name and password.

**NOTE**

The default user name is admin. The default password is admin. Change the password when you log in the system for first time to ensure system security. You can change the system display language on the login page.

**Figure 4-1** Login



Step3 Click Login, the main page is displayed.

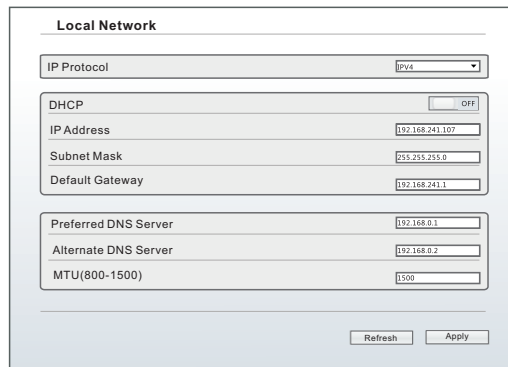
### 4.2 Modify IP address

Choose **Configuration > Device > Local Network**, the **Local Network** page is displayed.

Enter the IP address in the IP Address box and click **Apply** as shown in figure 4-2.

After the success of the IP address setting, please use the new IP address to log in the Web interface.

**Figure 4-2** Local Network



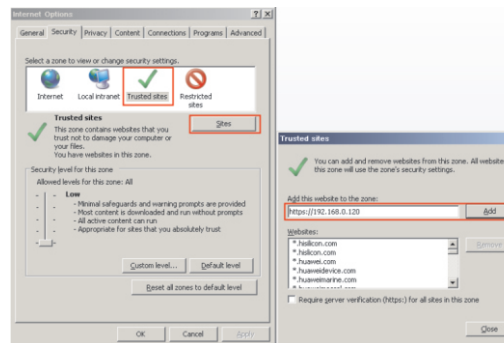
### 4.3 Browsing Video

To ensure the real-time video can be played properly, you must perform the following operation when you log in the web for the first time:

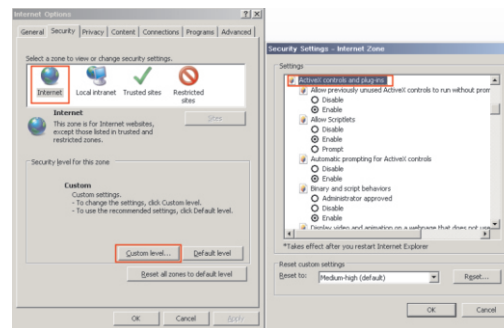
Step 1 the Internet Explorer. Choose **Tools > Internet options > Security > Trusted sites > Sites**, in the display dialog box, click **Add**, as shown in figure 4-3.

Step 2 In the Internet Explorer, choose **Tool > Internet Options > Security > Customer level**, and set **Download unsigned ActiveX control** and **initialize and script ActiveX controls not marked as safe for scripting under ActiveX controls and plug-ins to Enable**, as shown in figure 4-4.

**Figure 4-3** Adding a trusted site



**Figure 4-4** Configuring ActiveX control and plug-in



Step 3 Download and install the player control as prompted.

**NOTE**

If the repair tips displayed when installing the control, please ignore the prompt, and continue the installation, the login page is displayed when the control is loaded.

To browse a real-time video, click Live Video. The Live Video page is displayed, as shown in figure 4-5.

**Figure 4-5** Live Video



## 4.4 Two-way audio

**NOTE**

Partial camera do not support two-way audio, this section do not apply.

### 4.4.1 Camera <=> PC

Connection :

Step 1 Connect microphone to audio input interface of camera.

Step 2 Connect speaker to the PC audio output interface.

Step 3 Log in camera Web, click to turn on two-way audio.

### 4.4.2 PC <=> Camera

Step1 Connect microphone to PC audio input interface.

Step2 Connect speaker to camera audio out interface.

Step3 Log in camera Web, click to turn on two-way audio.

## 5 Appendix : Hazardous Substance Declaration

Component	Hazardous Substance or Element					
	Plumbum (Pb)	Mercury (Hg)	Cadmium (Cd)	Hexavalent Chromium (Cr6+)	Polybrominated Biphenyls (PBB)	Polybrominated Diphenyl Ethers (PBDE)
Structural part	x	o	o	o	o	o
Board/circuit module	x	o	o	o	o	o
Cable connector	x	o	o	o	o	o
Accessories	x	o	o	o	o	o

**NOTE**

o: indicates that the concentration of the hazardous substance in all homogeneous substances of the component is within the limit specified in SJ/T 11363-2006 Requirements for Concentration Limits for Certain Hazardous Substances in Electronic Information Products.

x: indicates that the concentration of the hazardous substance in at least one homogeneous substance of the component exceeds the limit specified in SJ/T 11363-2006 Requirements for Concentration Limits for Certain Hazardous Substances in Electronic Information Products.